

Deluxe Junior Suite  
ca. 37 sqm, max. 2 guests

# Flour chamber

»Mehlkammer«



platzl.de

# Flour chamber

King-size bed 2.00 × 2.10 meters with two mattresses

Separate living and sleeping area

Seating arrangement, lounge or corner table

Closet, wardrobe

Closed bathroom area

Connecting suites available

## Living area

Sony Smart TV

Bluetooth speaker, Sound system

SuitePad with digital guest information

Laptop-sized safe

Minibar

Nespresso machine

Electric Kettle

Air conditioning, individually adjustable

Power supply via international adapter, USB charging station

Supply of Baby cot upon request

## Bathroom

Walk-in rain shower

Separate WC

Bathroom amenities by eponé

Hair dryer by ghd

Fluffy bathrobes, slippers

## Included services

Refreshments from the minibar

Selection of Nespresso capsules and specialty teas

Free WLAN throughout the hotel

Concierge service

Valet parking

24/7 front office service

Access to spa and fitness area

Turndown service

High-quality pillow menu

Bicycle rental on request

## View

N° 158 Inner courtyard

N° 1 Inner courtyard

N° 2 Pfisterstrasse

## Other services

*against fee*

Babysitting service

Laundry and ironing service

Room service

In-room spa

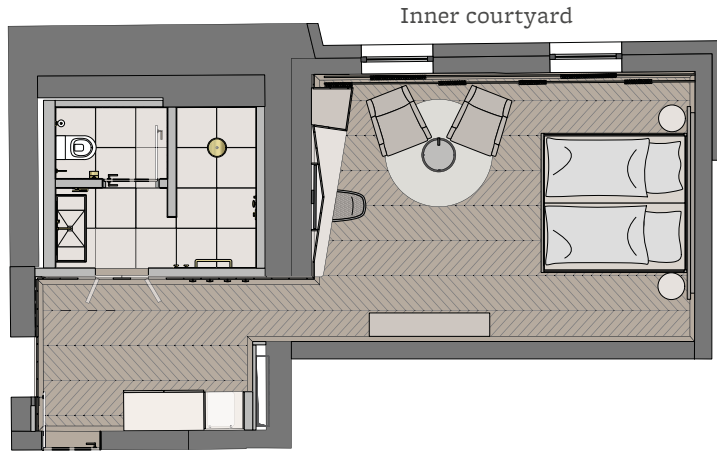




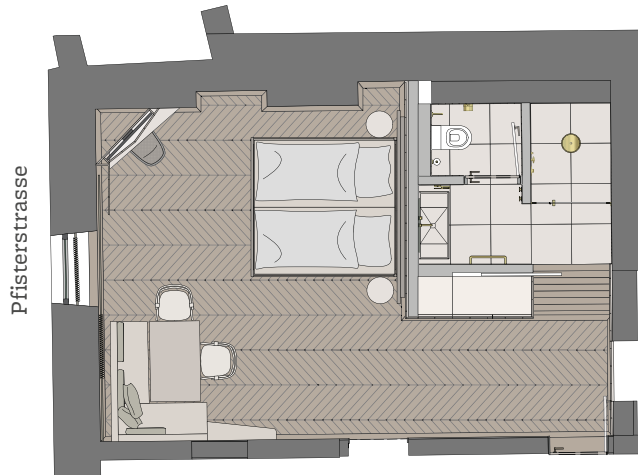
*Deluxe Junior Suite  
Living & sleeping area, bathroom*



*At the  
Pfister's home*



N° 01  
2nd Floor



N° 02  
2nd Floor