

Deluxe Suite
ca. 57 sqm, max. 3 guests

Pfister chamber

»Pfistergemach«

Pfister chamber

King-size bed 2.00 × 2.10 meters with two mattresses

Separate living and sleeping area

Seating arrangement, lounge table

Dining table, desk

Closet, wardrobe

Closed bathroom area

Connecting suites available

Living area

Sony Smart TV

Bluetooth speaker, Sound system

SuitePad with digital guest information

Laptop-sized safe

Minibar

Nespresso machine

Electric Kettle

Air conditioning, individually adjustable

Power supply via international adapter, USB charging station

Baby cot upon request

Bathroom

Walk-in rain shower

Separate WC

Bathroom amenities by eponé

Hair dryer by ghd

Fluffy bathrobes, slippers

Included services

Refreshments from the minibar

Selection of Nespresso capsules and specialty teas

Free WLAN throughout the hotel

Concierge service

Valet parking

24/7 front office service

Use of the spa and fitness area

Turndown service

High-quality pillow menu

Bicycle rental on request

View

N° 5 Sparkassenstrasse

N° 10 Sparkassenstrasse

Other services

against fee

Babysitting service

Laundry and ironing service

Room service

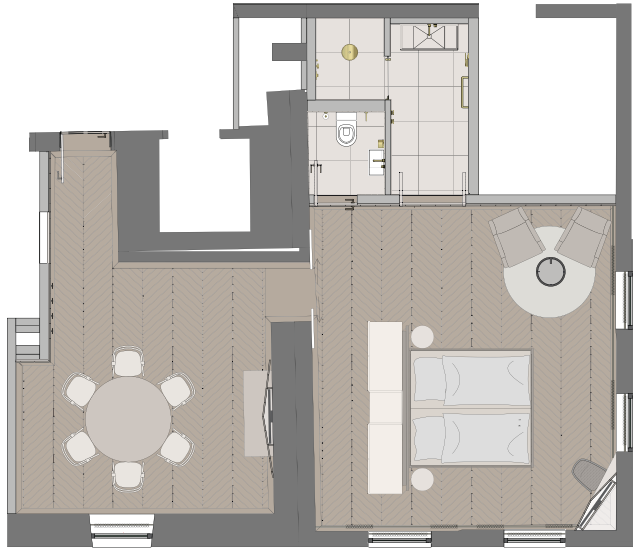
In-room spa



*Deluxe Suite
Living & sleeping area*

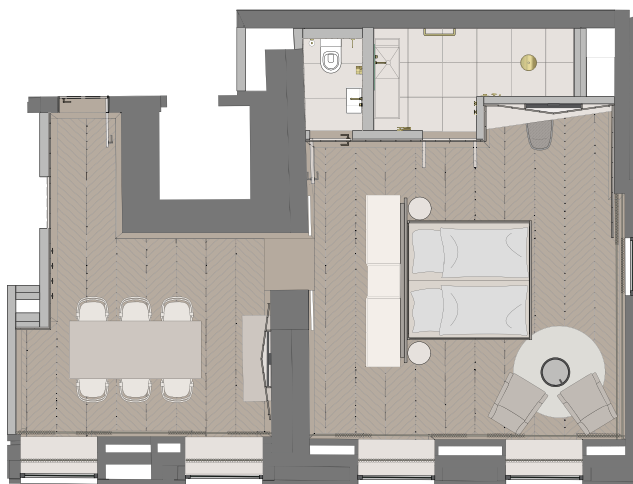


*At the
Pfister's home*



*N° 05
2nd Floor*

Sparkassenstrasse



*N° 10
3rd Floor*

Sparkassenstrasse