

Junior Suite
ca. 31 sqm, max. 2 guests

Journeyman's chamber

»Gesellenkammer«

Journeyman's chamber

King-size bed 2.00 × 2.10 meters with two mattresses

Combined living and sleeping area

Seating arrangement, lounge table, desk (optional)

Closet, wardrobe

Open or closed bathroom area

Connecting suites available

Living area

Sony Smart TV
Bluetooth speaker, Sound system
SuitePad with digital guest information
Laptop-sized safe
Minibar
Nespresso machine
Electric Kettle
Air conditioning, individually adjustable
Power supply via international adapter, USB charging station
Baby cot upon request

Bathroom

Walk-in rain shower
Separate WC
Bathroom amenities by eponé
Hair dryer by ghd
Fluffy bathrobes, slippers

Included services

Refreshments from the minibar
Selection of Nespresso capsules and specialty teas
Free WLAN throughout the hotel
Concierge service
Valet parking
24/7 front office service
Use of the spa and fitness area
Turndown service
High-quality pillow menu
Bicycle rental on request

View

N° 176 Inner courtyard
N° 3 Pfisterstrasse
N° 6 Inner courtyard
N° 7 Inner courtyard |
Pfisterstrasse
N° 8 Pfisterstrasse

Other services

against fee
Babysitting service
Laundry and ironing service
Room service
In-room spa



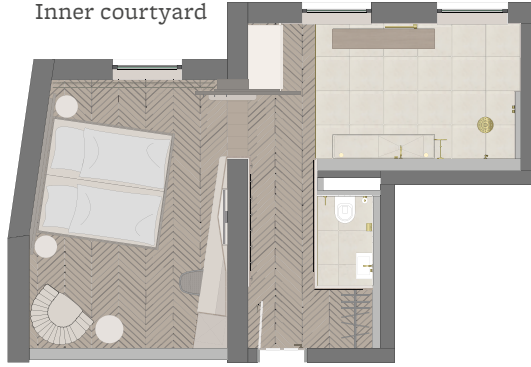
Junior Suite
Living & sleeping area, bathroom



At the
Pfister's home

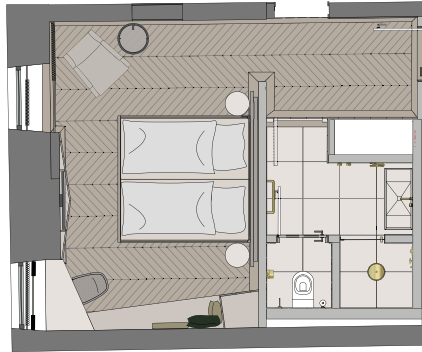
*Junior Suite
Floor plans*

Inner courtyard



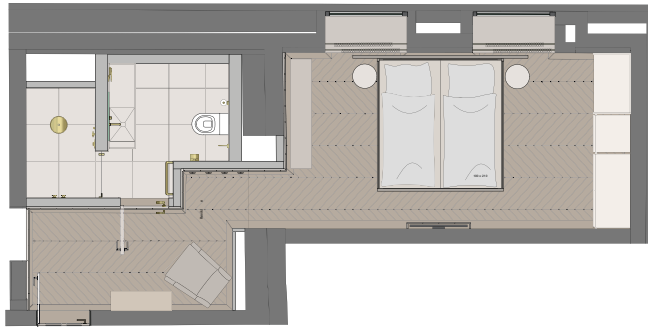
*N° 176
1st Floor*

Pfisterstrasse



*N° 03
2nd Floor*

Inner courtyard



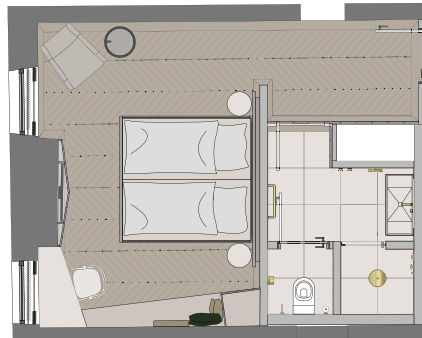
*N° 06
3rd Floor*

Pfisterstrasse



*N° 07
3rd Floor*

Pfisterstrasse



*N° 08
3rd Floor*

*At the
Pfister's home*